



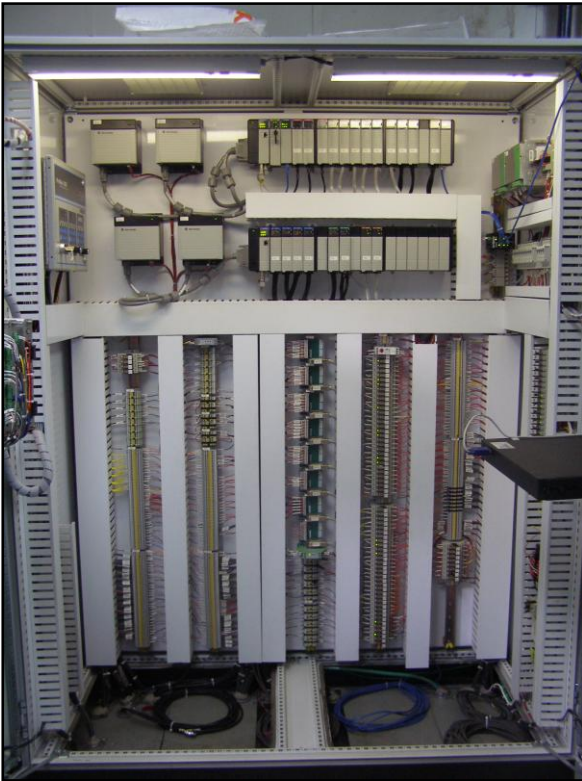
**HPI, LLC**



## Bringing Control to Valero

Valero's slogan, "Investing in Excellence" became more than just a slogan when they awarded HPI with the contract for upgrading the controls and instrumentation for one of their GE Frame 5 Gas Turbine units.

The replacement controller for the new Turbine Control Systems is based upon the Allen Bradley ControlLogix Controller. The new Controller will contain the software for the Gas Turbine governor control, Start, Stop and Auxiliary System sequencing.



The existing control cabinet body may be re-used; however the control system within it will be completely removed. New sub-panels will be provided for the rear and sides of the existing cabinet to mount the new controls equipment and a new door will be fitted. The existing cabinet door and sub-panels will be removed and demolished.

Each new control system will be equipped with a touch screen HMI display, through which the gas turbine will be monitored and operated. In addition five pushbuttons, Start, Shutdown, Alarm Acknowledge, Alarm Reset and Emergency Stop will be fitted to the front door. Also fitted to the door will be the Power Quality Meter, Starts Counter and a Fired Hours Timer.

As technological leaders in the supply of turbo-generator services, for both the OEM and retrofit markets, HPI uses professional project teams with extensive experience in the design of hardware and software, manufacturing, testing, installation, commissioning and supporting of turbine systems. Former key VT Controls and HSDE staff have over 150 cumulative years experience in the industry make up the HPI engineering, project, organization and management teams; they have been proven through many years of providing turbine retrofits and are formed of highly qualified personnel who fully understand the demands of this specialized industry.