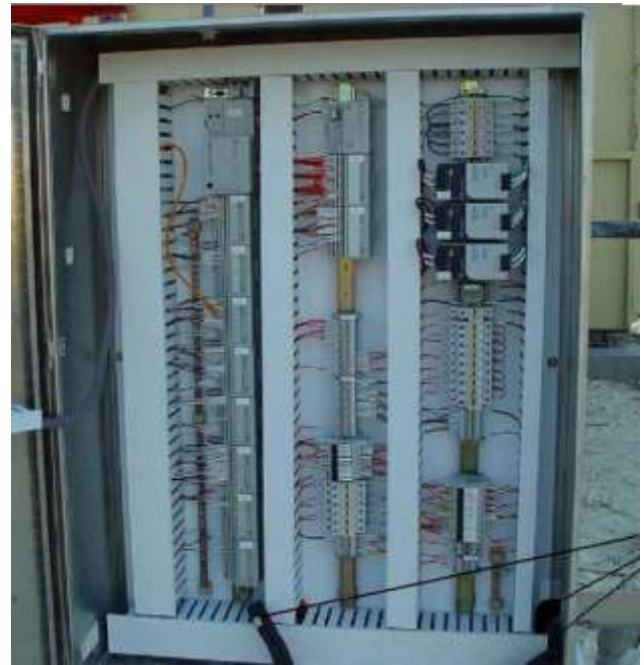




HPI's HCH Supply Upgrade

HCH Supply Co., Ltd. has grown to be one of the major suppliers and distributors in the Egyptian petroleum industry for equipment, services and technology. HCH requested a proposal from HPI for the Supply of New Controls System and Instrumentation for three Waukesha L7042GSI Crude Oil Pumps.

HPI was pleased when HCH chose them for this upgrade. The HPI supplied controls will raise the standard of the system to a level surpassing that of the Woodward or OEM. The new system greatly improves reliability and reduces maintenance. The units will have an advanced PLC system, a graphical interface module, and minimal pilot lights and push buttons. Since the location for the upgrade is in a Class 1 Div 2 Hazardous area, the units will be enclosed in NEMA 4X stainless steel enclosures. The units are based upon Allen Bradley Flexlogix PLC. The PLC contains software for the Gas Engine Controls.



HPI is also providing three new junction boxes which will be mounted around the skid. One box is for analog signals, one for thermocouple signals, and the third is for digital signals.

Installations for this project are in accordance with the National Electric Code (NEC) guidelines for Hazardous Locations.

As technological leaders in the supply of turbo-generator services, for both the OEM and retrofit markets, HPI uses professional project teams with extensive experience in the design of hardware and software, manufacturing, testing, installation, commissioning and supporting of turbine systems. Former key VT Controls and HSDE staff have over 150 cumulative years experience in the industry make up the HPI engineering, project, organization and management teams; they have been proven through many years of providing turbine retrofits and are formed of highly qualified personnel who fully understand the demands of this specialized industry.